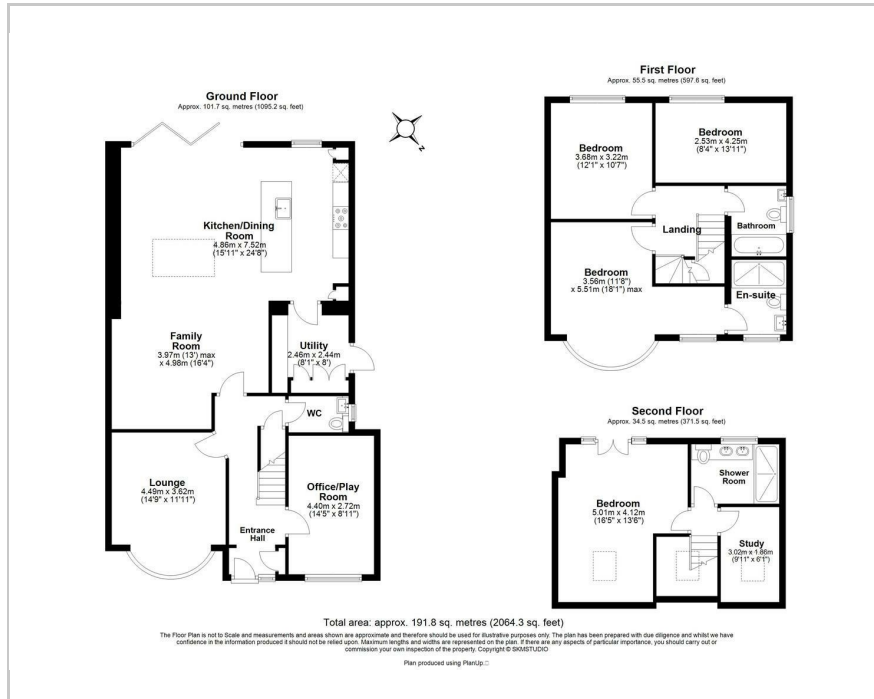


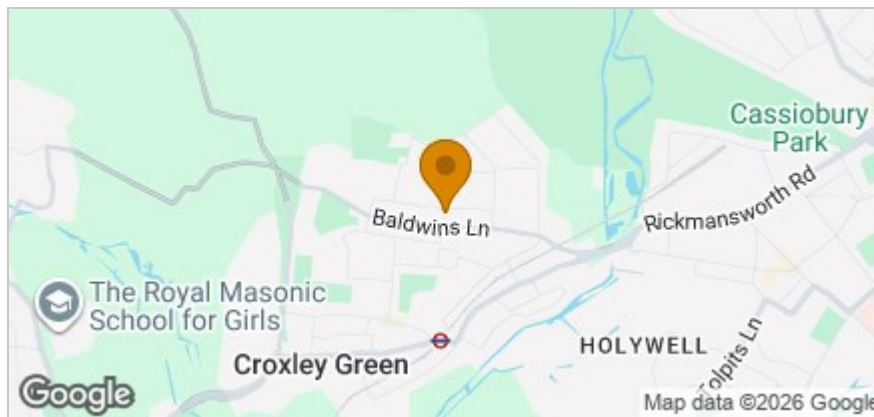


51 Kenilworth Drive, Croxley Green, WD3 3NN
Price Guide £1,075,000

Floor Plan



Area Map



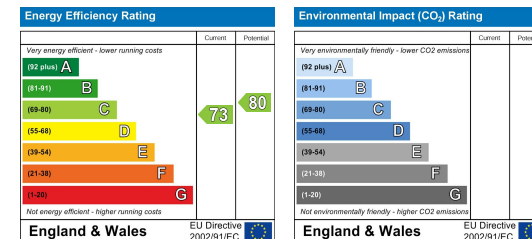
Accommodation

- Beautifully presented super extended 5 bed semi detached
- Very large modern open plan kitchen/dining/family room
- Two separate reception rooms
- Two bathrooms and one en-suite
- Utility room and a separate W.C
- Large south facing rear garden with patio area
- Central village location
- NO UPPER CHAIN

Viewing

Please contact our Grosvenor Estate Agents Ltd Office on 01923 711651 if you wish to arrange a viewing appointment for this property or require further information.

Energy Efficiency Graph



These particulars, whilst believed to be accurate are set out as a general outline only for guidance and do not constitute any part of an offer or contract. Intending purchasers should not rely on them as statements of representation of fact, but must satisfy themselves by inspection or otherwise as to their accuracy. No person in this firm's employment has the authority to make or give any representation or warranty in respect of the property.

163 New Road, Croxley Green, Hertfordshire, WD3 3HB
Tel: 01923 711651 Email: sales@grosvenorestateagents.co.uk www.grosvenorstates.co.uk